



MORILEE  
MADELINE GARDNER

---

VIZCAYA

Size Chart for Vizcaya, Valencia, Valentina and Damas De Vizcaya

SIZE	00	0	2	4	6	8	10	12	14	16	18	20	22	24
BUST	31	32	33	34	35	36.5	38	39.5	41	42.5	44.5	46.5	49.5	53
WAIST	22.5	23.5	24.5	25.5	26.5	28	29.5	31	32.5	34	36	38	41	44.5
HIP	34.5	35.5	36.5	37.5	38.5	40	41.5	43	44.5	46	48	50	53	56.5

# MORILEE

MADELINE GARDNER

---

VIZCAYA





89401

*Crystal Beading on Ombré Patterned Sequins on a Tulle Over Glitter Tulle Ball Gown with Detachable Bell Sleeves and Back Bow  
Matching Bolero Jacket*

-  Silver Rose
-  Silver Sage



89402

*Rhinestone and Crystal Beading on a Tulle Over Sparkle Tulle Ball Gown with Horsehair Edged, Flounced Overskirt and Detachable Off-the-Shoulder Sleeves*

 Blush/Rose Gold

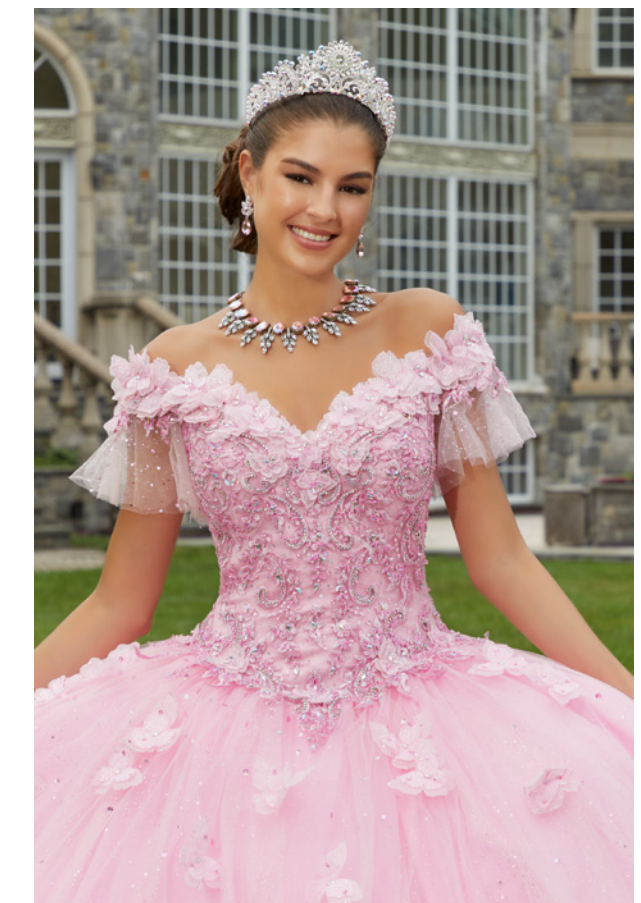
 Emerald/Gold



89403

*Crystal Beaded Lace Appliqués and Three-Dimensional Flowers on a Tulle Over Sparkle Tulle Ball Gown with Floral Skirt*

-  Mint
-  Lilac
-  Pink
-  White



89404

*Rhinestone and Crystal Beaded Embroidery with Three-Dimensional Butterflies on a Tulle Over Sparkle Tulle Ball Gown with Detachable Back Bow*

-  Pucker Up Pink
-  Nude/Gold
-  White

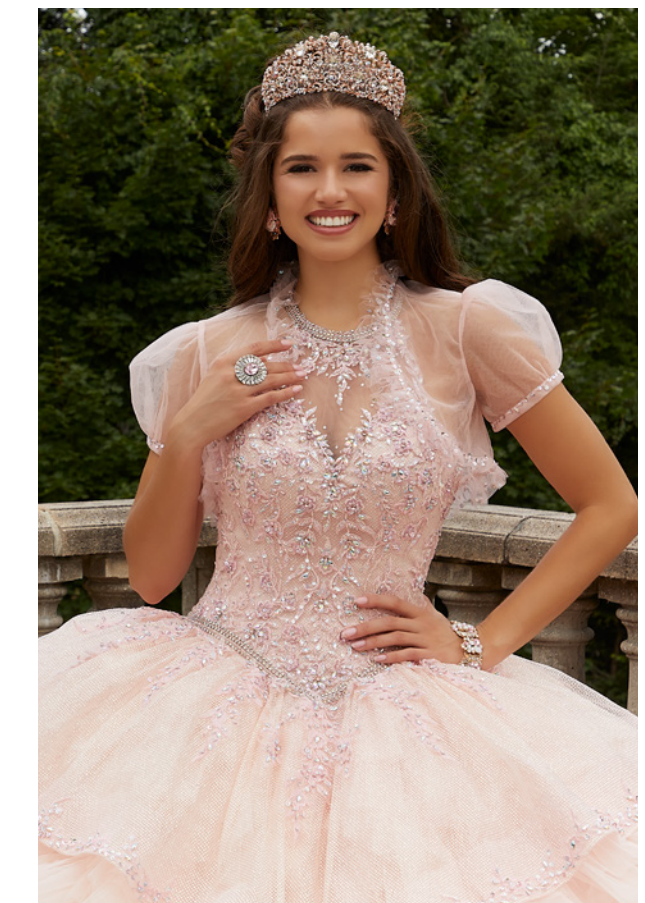


89405

*Crystal Beaded, Contrasting Floral Embroidery on a Patterned Glitter Tulle Ball Gown*

**Style 89405T Matching Train Sold Separately**

-  Blush
-  Light Blue
-  Orchid



89406

*Crystal Beaded Embroidery with Rhinestone Trim on a Glitter Net Bodice and Overskirt on a Ruffled Tulle Ball Gown*

*Matching Bolero Jacket*

 **French Blue**

 **Blush**

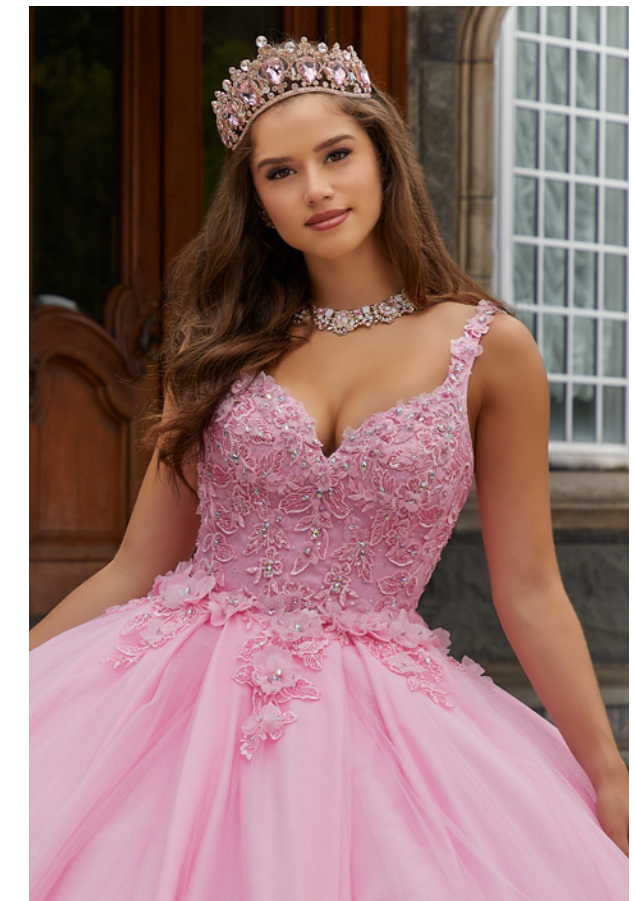




89407

*Crystal Beaded Lace Appliques on Chantilly Lace Bodice Meets the Princess Tulle Over Sparkle Tulle Ball Gown Skirt with Detachable Puff Sleeves*

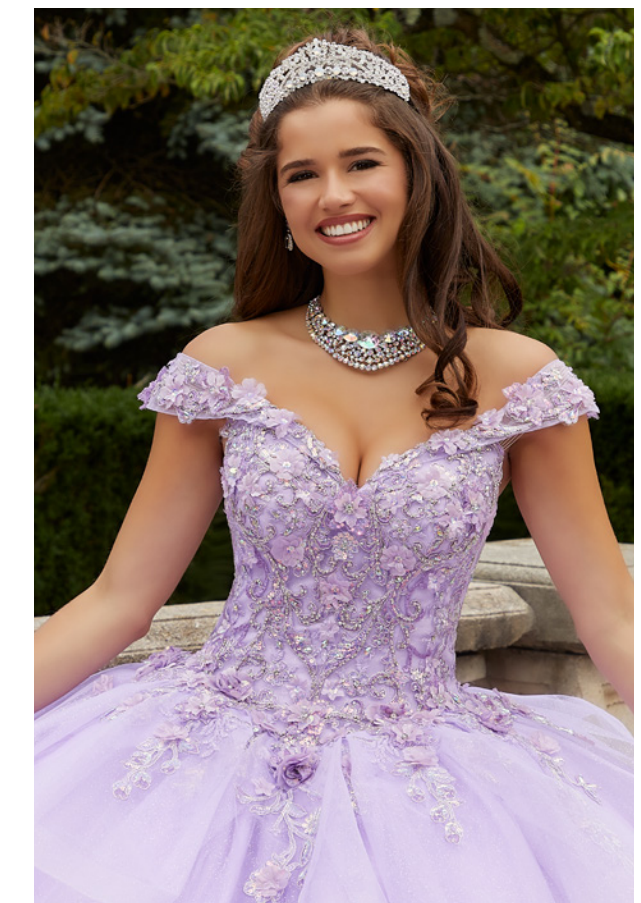
-  **Bright Mint**
-  **Bahama Blue**
-  **Scarlet**
-  **White**



89408



*Two-Piece; Three-Dimensional Floral Lace Appliqués on Tulle Over Sparkle Tulle Mini Dress with Full Tulle Over Sparkle Tulle Ball Gown Skirt*

-  Pucker Up Pink
-  Aqua
-  Orchid



89409

*Crystal Beaded, Three-Dimensional Floral Lace Appliqués on a Tulle Over Glitter Tulle Ball Gown with Flounced Overskirt and Horsehair Edging*

-  Light Blue
-  Light Purple



89410

*Rhinestone and Crystal Beaded Embroidery on a Ruffled Tulle Ball Gown with Removable, Sparkle Tie Bow Shoulder Straps*

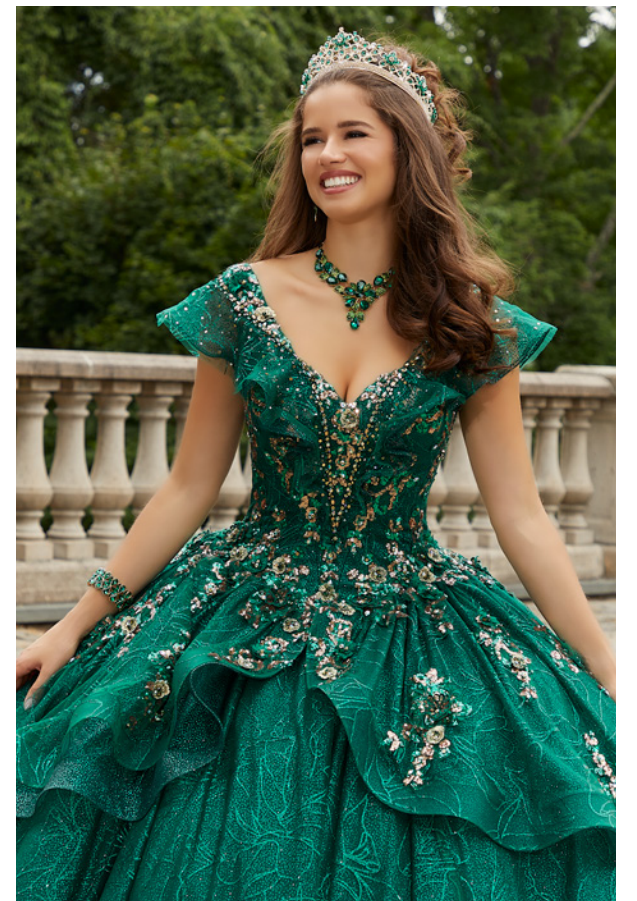
-  **Emerald**
-  **French Blue**
-  **Orchid**
-  **Sage**



89411



*Crystal Beaded Lace Appliqués on a Patterned Glitter Tulle Ball Gown with Detachable Bishop Sleeves*

-  French Blue
-  Emerald
-  Blush/Rose Gold



89412

*Crystal Beaded, Contrasting Three-Dimensional Sequined Appliqués on a Floral Patterned Glitter Tulle Over Sparkle Tulle Ball Gown with Horsehair Edged Hemline and Overskirt*

-  Sangria/Gold
-  Emerald/Gold



89413

*Confetti Beading on a Tulle Over Glitter Tulle Ball Gown with Satin Corset Trim and Detachable Puff Sleeves and Back Bow*

 **Black/Multi**

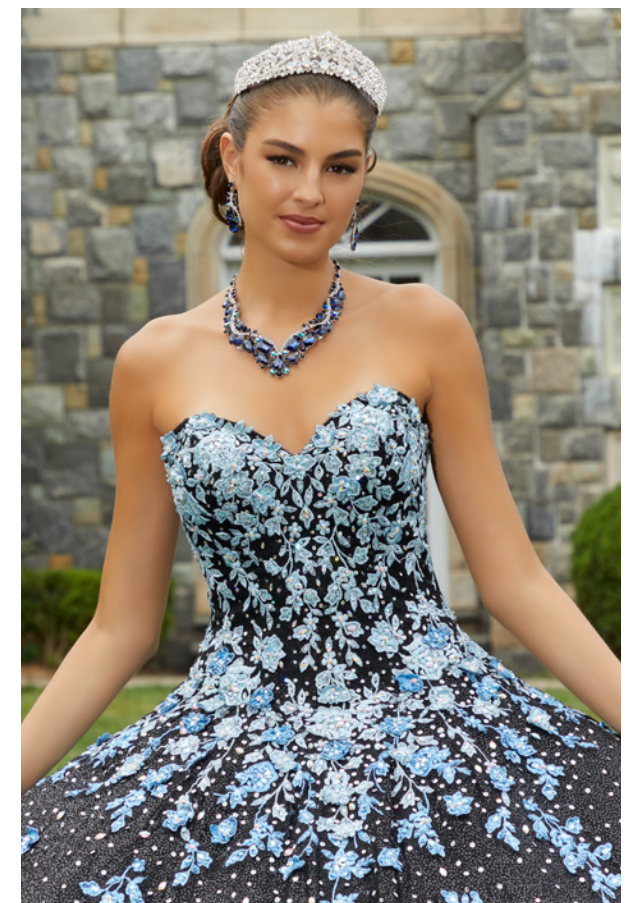


89414

*Crystal Beaded, Metallic Embroidery with Three-Dimensional Butterflies on a Princess Tulle Over Sparkle Tulle Ball Gown with Horsehair Edging*

- French Blue
- Orchid
- Blush
- White





89415

*Crystal Beaded, Contrasting Ombre Embroidery on a Glitter Tulle Ball Gown with Detachable Ruched Sleeves and Back Bow*

 **Black/Blue**

 **Black/Pink**



89416

*Rhinestone and Crystal Beading on Metallic Embroidery on a Patterned Glitter Tulle Ball Gown with Horsehair Edged Overskirt and Detachable Bell Sleeves and Back Bow*

-  French Blue
-  Blush/Rose Gold



89417

*Ruffled Tulle Overskirt*

-  French Blue
-  Orchid
-  Blush
-  Emerald
-  Scarlet

89418

*Floral Patterned Glitter Tulle Cape with Three-Dimensional Butterflies*

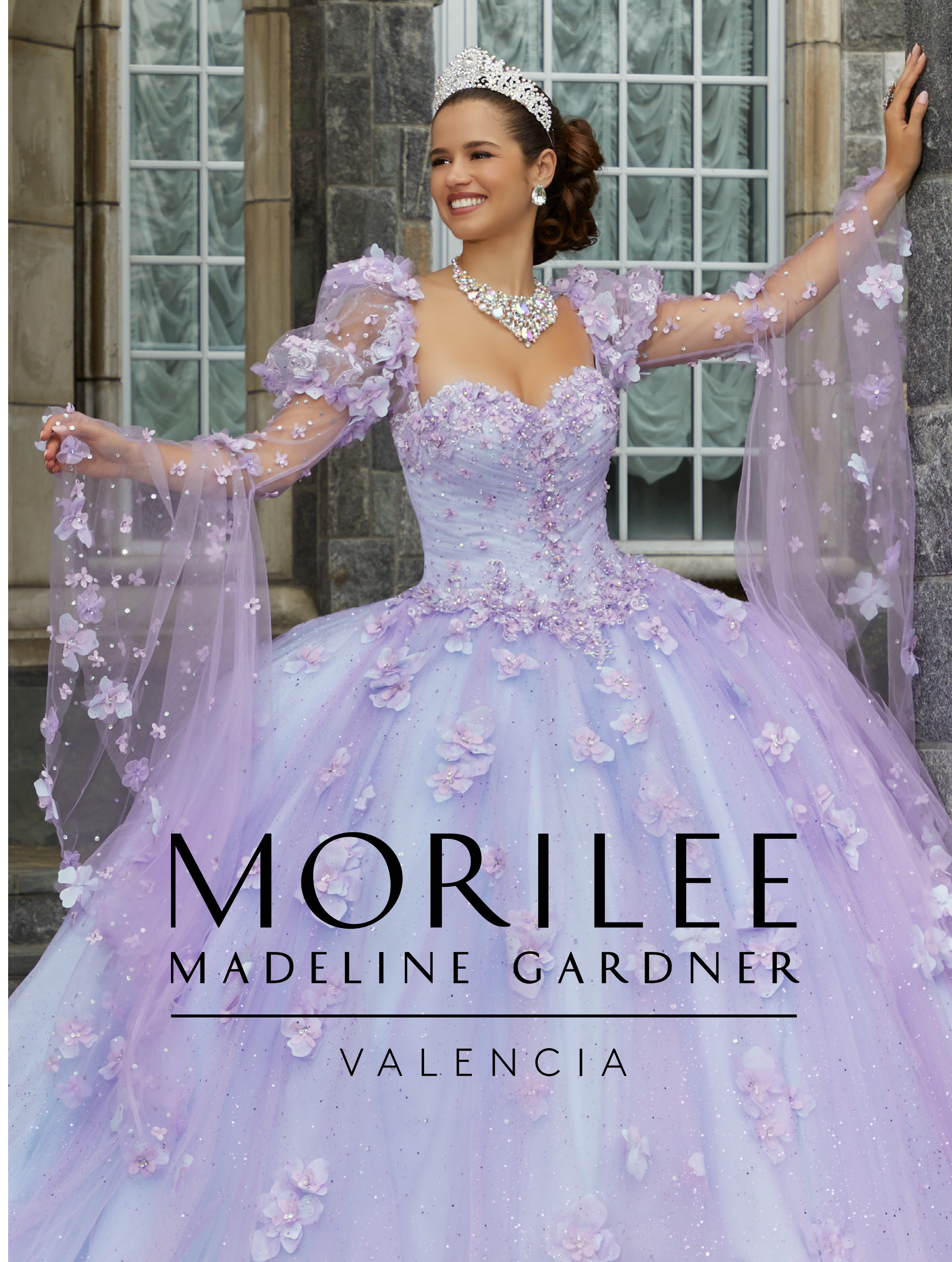
-  Emerald
-  Sangria



89419

*Beaded Tulle Gloves*

- Sangria
- French Blue
- Orchid
- Blush
- Emerald
- Scarlet
- Champagne
- Black
- White



**MORILEE**  
MADELINE GARDNER

VALENCIA



60171



*Allover Sequined Velvet Ball Gown with Satin Boned Bodice and Detachable Puff Sleeves*

-  Wine
-  Emerald
-  Black



60172




*Crystal Beaded, Sequined Appliqués on a Tulle Over Sparkle Tulle Ball Gown with Flounced Overskirt and Detachable Long Puff Sleeves with Matching Choker and Detachable Back Bow*

-  Orchid
-  Scarlet



60173

*Crystal Beaded Straps and Bodice Trim on a Diamantina  
Satin Box-Pleated Ball Gown with Detachable Back Bow*

-  Royal
-  Red
-  Blush



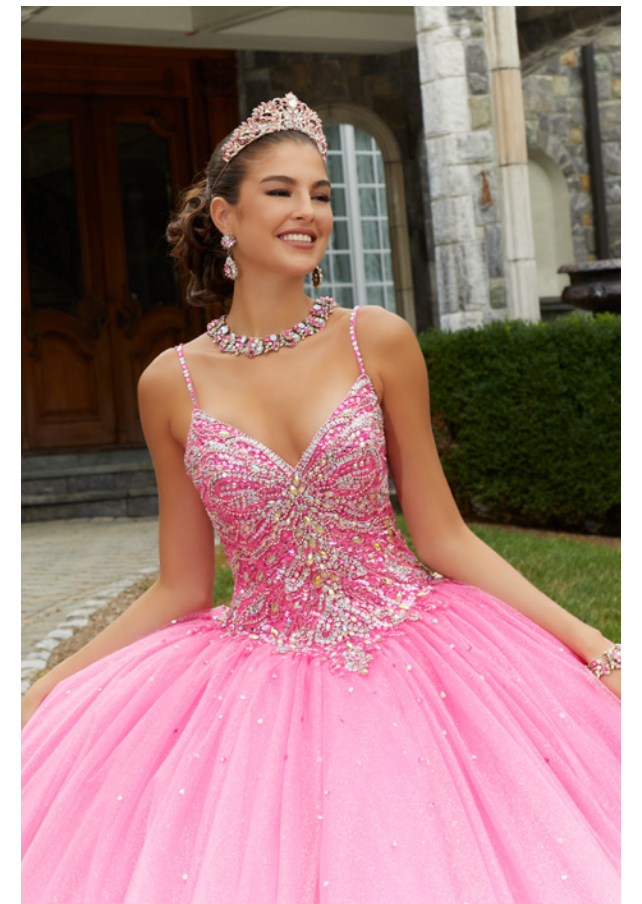
60174

*Crystal Beaded, Three-Dimensional Floral Appliqués on a Glitter Tulle Ball Gown with Detachable Princess Sleeves and Back Bow*

 **Lavender Moss**




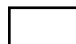
 **Blue Orchid**





60175


*Rhinestone and Crystal Beading on a Sparkle Tulle Ball Gown with Detachable Back Bow  
Matching Bolero Jacket*

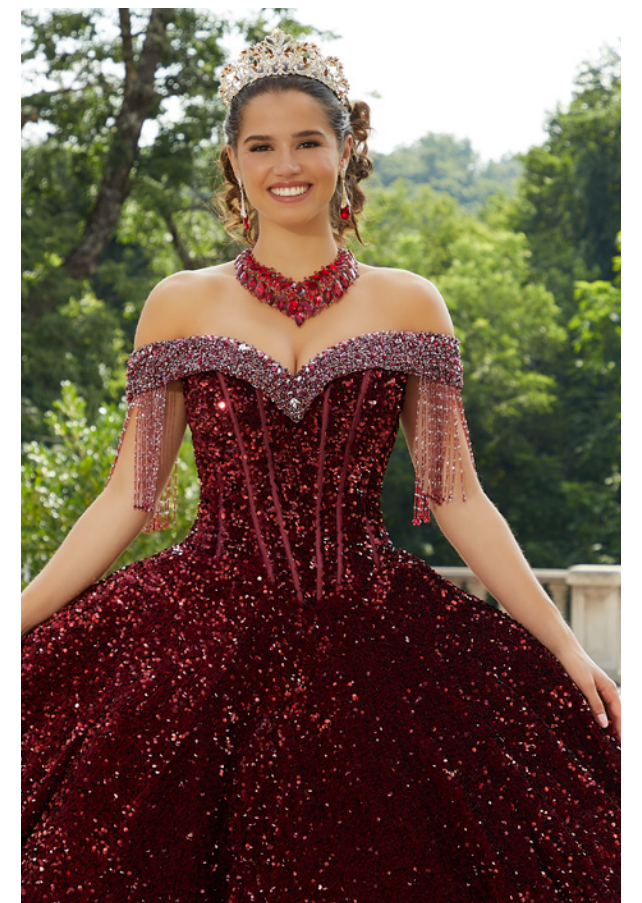
-  Lipstick
-  Rose Quartz
-  Regal Royal
-  White



60176

*Crystal Beaded, Contrasting Floral Embroidery on a Tulle Over Glitter Tulle Ball Gown*

-  Sage Garden
-  Orchid Garden



60177

*Crystal Beaded Neckline Trim and Beaded Fringe Sleeves on an All-over Sequined Velvet Ball Gown with Satin Boned Bodice*

 Emerald

 Wine

MORILLEE

MADLINE GARDNER

---

VALENTINA





34081

*Rhinestone and Crystal Beaded, Three-Dimensional Floral Lace Appliqués on a Tulle Over Sparkle Tulle Ball Gown with Flower Skirt and Detachable Off-the-Shoulder Sleeves and Matching Beaded Tulle Gloves*

 Wild Berry

 Champagne/Blush



34082

*Rhinestone and Crystal Beaded Metallic Embroidery on a Floral Patterned Glitter Tulle Ball Gown with Feather Skirt and Matching Gloves*


 Iced Champagne

 Blush

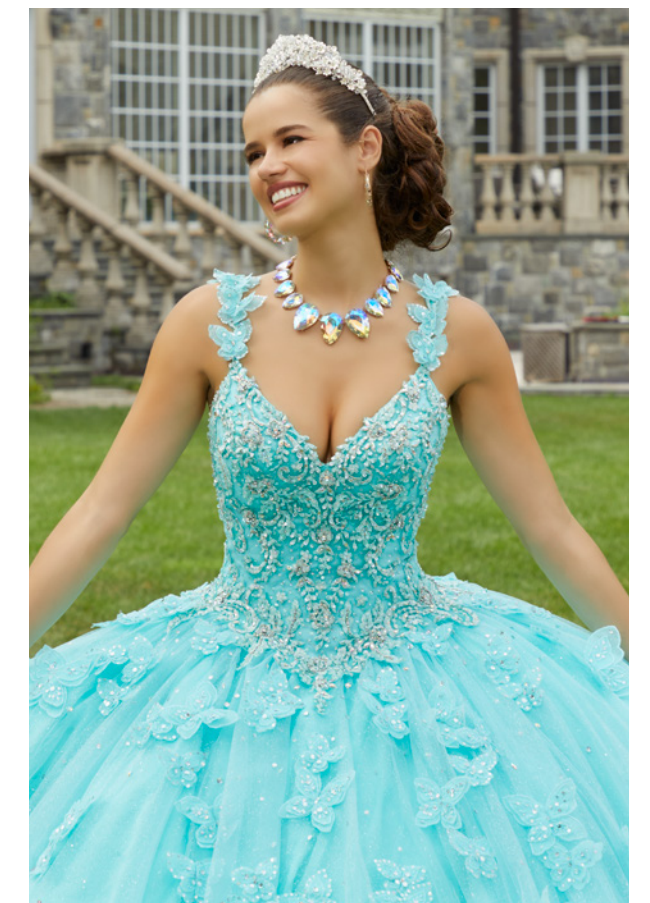


34083

*Crystal Beaded Lace Appliqués on a Patterned Glitter Tulle, Box-Pleated Ball Gown with Chandelier Bodice Beading and Detachable Off-the Shoulder Sleeves*

 Bahama Blue/Silver

 Blush/Gold



34084

*Rhinestone and Crystal Beaded Embroidery with Three-Dimensional Butterflies on a Sparkle Tulle Ball Gown with Detachable Back Bow*

 Aqua

 Blush/Champagne





34085

*Crystal Beaded, Metallic Lace Appliqués on a Patterned Glitter Tulle Over Sparkle Tulle Ball Gown with Detachable Back Bow and Rosette Sleeves*


 **Champagne/Gold**


 **Sangria/Gold**



34086

*Crystal Beaded Lace Appliqués on a Tulle Over Sparkle Tulle Ball Gown with Tie-Back Keyhole*

 Sangria/Gold

 Nude/Gold



MORILEE  
MADELINE GARDNER  
DAMAS DE VIZCAYA



9611

*Patterned Glitter Net with Satin Tie Back*

-  French Blue
-  Blush/Rose Gold
-  Emerald



9612

*Satin with Beaded Neckline Trim and Detachable Puff Sleeves*

- French Blue
- Sangria
- Blossom
- Emerald
- Orchid
- Scarlet
- White

9613

*Floral Patterned Glitter Tulle with Tie Back*

- Emerald
- French Blue
- Blush



9614

*Glitter Embroidery on Sparkle Tulle*

- Emerald
- Champagne/Gold
- Sangria/Gold
- Orchid

9615

*Satin*

- |  |  |
|--|--|
| <span style="display: inline-block; width: 15px; height: 10px; background-color: #FFFF00; border: 1px solid black; margin-right: 5px;"></span> Yellow      | <span style="display: inline-block; width: 15px; height: 10px; background-color: #008000; border: 1px solid black; margin-right: 5px;"></span> Emerald |
| <span style="display: inline-block; width: 15px; height: 10px; background-color: #0000FF; border: 1px solid black; margin-right: 5px;"></span> French Blue | <span style="display: inline-block; width: 15px; height: 10px; background-color: #FFB6C1; border: 1px solid black; margin-right: 5px;"></span> Blossom |
| <span style="display: inline-block; width: 15px; height: 10px; background-color: #FFC0CB; border: 1px solid black; margin-right: 5px;"></span> Blush       | <span style="display: inline-block; width: 15px; height: 10px; background-color: #000080; border: 1px solid black; margin-right: 5px;"></span> Navy    |
| <span style="display: inline-block; width: 15px; height: 10px; background-color: #FF0000; border: 1px solid black; margin-right: 5px;"></span> Scarlet     | <span style="display: inline-block; width: 15px; height: 10px; background-color: #FFFFFF; border: 1px solid black; margin-right: 5px;"></span> White   |
| <span style="display: inline-block; width: 15px; height: 10px; background-color: #000000; border: 1px solid black; margin-right: 5px;"></span> Black       |  |



9616

Three-Dimensional Floral Appliqués and Beaded Waist Trim on Sparkle Tulle with Detachable Off-the-Shoulder Sleeves

- Bahama Blue
- Sage
- Champagne
- White
- Sangria
- Orchid
- Scarlet

9617

Satin with Beaded Trim

- Scarlet
- Emerald
- Royal
- Blossom
- Navy
- White
- Sangria
- Black



9618

*Beaded Trim on Sparkle Tulle*

- Sangria
- Sage
- Orchid
- White
- Emerald
- Blush
- Champagne

9619

*Sparkle Tulle with Three-Dimensional Flowers*

- Navy
- Scarlet
- Sangria
- Pucker Up Pink
- Blush
- Emerald
- French Blue

# MORILEE

MADELINE GARDNER

---

VIZCAYA

Mori Lee LLC

**@morileeofficial**  
**@madelinegardner**

[www.morilee.com](http://www.morilee.com)





**Size Chart for Vizcaya, Valencia, Valentina and Damas De Vizcaya**

<b>SIZE</b>	<b>00</b>	<b>0</b>	<b>2</b>	<b>4</b>	<b>6</b>	<b>8</b>	<b>10</b>	<b>12</b>	<b>14</b>	<b>16</b>	<b>18</b>	<b>20</b>	<b>22</b>	<b>24</b>
<b>BUST</b>	31	32	33	34	35	36.5	38	39.5	41	42.5	44.5	46.5	49.5	53
<b>WAIST</b>	22.5	23.5	24.5	25.5	26.5	28	29.5	31	32.5	34	36	38	41	44.5
<b>HIP</b>	34.5	35.5	36.5	37.5	38.5	40	41.5	43	44.5	46	48	50	53	56.5